



2021



www.sera.de

When sustainability is important



© Romolo Tavani
shutterstock.com

Appropriate and close to nature

Our ecological consciousness is mirrored in all our developments. We are happy to set an example with our sustainable products also in this year.

Besides having converted the food range to "Nature", new food types were again developed also in the 50th year. All "Nature" food types are free from dyes and preservatives. Also, sustainable alternatives add to or replace ingredients. For instance, important and high quality protein more and more originates from insects such as larvae of *Hermetia* flies or mealworms. Breeding them not only takes place in a very resource saving manner, but they also represent the natural diet of many biotope and ornamental fish.



Nature

With natural ingredients

- ✓ Free from dyes
- ✓ Free from preservatives
- ✓ Easily digestible



Energy efficient and regional

Driven by our desire and wish for constant improvement, we are also constantly optimizing the manufacturing process in the background. Only modern and efficient machines – driven by our 500 kWp photovoltaic system – allow doing without preservatives in food manufacturing. Production paths are kept short, and suppliers from the region are commissioned. For instance, also the new cabinets for our aquariums are manufactured in direct proximity and by a workshop for disabled people.



Consistently finalized

Besides manufacturing and contents, of course a third important point is yet missing: the packaging. In the last year, food cans made of biologic plastic material have entered our range. The cans consist of 35% sugar cane, and are 100% recyclable. The sugar cane amount being used arises from sugar production as a waste product. This additionally saves resources and reduces CO₂ emissions.





January

1 Fri	9 Sat	17 Sun	25 Mon
2 Sat	10 Sun	18 Mon	26 Tue
3 Sun	11 Mon	19 Tue	27 Wed
4 Mon	12 Tue	20 Wed	28 Thu
5 Tue	13 Wed	21 Thu	29 Fri
6 Wed	14 Thu	22 Fri	30 Sat
7 Thu	15 Fri	23 Sat	31 Sun
8 Fri	16 Sat	24 Sun	

Betta splendens Siamese Fighter

Bettas belong to the labyrinth fish family and breathe air at the water surface, especially as adult animals. The tank, correspondingly, must provide the opportunity to do so. They require an aquarium with sufficient hideaways and like some shade and plenty of plants.

Bettagran Nature
The slowly sinking granules contain natural astaxanthin for ideal color development





February

1 Mon	9 Tue	17 Wed	25 Thu
2 Tue	10 Wed	18 Thu	26 Fri
3 Wed	11 Thu	19 Fri	27 Sat
4 Thu	12 Fri	20 Sat	28 Sun
5 Fri	13 Sat	21 Sun	
6 Sat	14 Sun	22 Mon	
7 Sun	15 Mon	23 Tue	
8 Mon	16 Tue	24 Wed	

Pseudotropheus socolofi Pindani

These Mbunas are native to Lake Malawi. Males do well with several females in a well structured tank. Together with other Malawi species (as with *Labidochromis caeruleus* in this case) they are usually very peaceful. They are basically limnivorans, therefore the diet should focus on herbivorous food.

Granugreen Nature
The food for smaller and big herbivorous cichlids





March

1 Mon	9 Tue	17 Wed	25 Thu
2 Tue	10 Wed	18 Thu	26 Fri
3 Wed	11 Thu	19 Fri	27 Sat
4 Thu	12 Fri	20 Sat	28 Sun
5 Fri	13 Sat	21 Sun	29 Mon
6 Sat	14 Sun	22 Mon	30 Tue
7 Sun	15 Mon	23 Tue	31 Wed
8 Mon	16 Tue	24 Wed	

Amphiprion percula

Orange Clownfish

The marine inhabitant known as clownfish lives in coral reefs in close symbiosis with sea anemones. Here, however, it is on a little trip to a Gorgonian coral. One female lives together with several males. When the female dies, the strongest male switches its gender.

marine GVG-Mix Nature
Natural food for ornamental
fish in marine aquariums





April

1 Thu	9 Fri	17 Sat	25 Sun
2 Fri	10 Sat	18 Sun	26 Mon
3 Sat	11 Sun	19 Mon	27 Tue
4 Sun	12 Mon	20 Tue	28 Wed
5 Mon	13 Tue	21 Wed	29 Thu
6 Tue	14 Wed	22 Thu	30 Fri
7 Wed	15 Thu	23 Fri	
8 Thu	16 Fri	24 Sat	

Cyprinus carpio Koi pond

Water quality is very important when keeping Koi and considerably contributes to the animals doing well. Considering a size of up to 120 cm (4 ft.), the pond should be accordingly dimensioned. The animals can get 60 years old and enter a trusting and personal relation to humans.

Koi Professional
Food matching the
requirements of Koi





May

1 Sat	9 Sun	17 Mon	25 Tue
2 Sun	10 Mon	18 Tue	26 Wed
3 Mon	11 Tue	19 Wed	27 Thu
4 Tue	12 Wed	20 Thu	28 Fri
5 Wed	13 Thu	21 Fri	29 Sat
6 Thu	14 Fri	22 Sat	30 Sun
7 Fri	15 Sat	23 Sun	31 Mon
8 Sat	16 Sun	24 Mon	

Caridina

Red Zebra Pinto

These dwarf shrimps prefer densely planted aquariums with many hideaways. In particular, various mosses are suitable as a meadow. Smallest micro organisms gather there which serve as food for the shrimps. At the same time, small and young animals find shelter there.

Shrimps Nature
Small sinking granules as staple diet for shrimps





June

1 Tue	9 Wed	17 Thu	25 Fri
2 Wed	10 Thu	18 Fri	26 Sat
3 Thu	11 Fri	19 Sat	27 Sun
4 Fri	12 Sat	20 Sun	28 Mon
5 Sat	13 Sun	21 Mon	29 Tue
6 Sun	14 Mon	22 Tue	30 Wed
7 Mon	15 Tue	23 Wed	
8 Tue	16 Wed	24 Thu	

Malaclemys terrapin

Diamondback Terrapin

This medium sized terrapin from North America is adapted to brackish water but also tolerates fresh or marine water – ideally with salt addition in a terrarium. The terrarium should provide the carnivorous animals with sufficient swimming space and additionally fresh water for drinking.

reptil Professional
Carnivor Nature
Complementary food for
carnivorous reptiles





July

1 Thu	9 Fri	17 Sat	25 Sun
2 Fri	10 Sat	18 Sun	26 Mon
3 Sat	11 Sun	19 Mon	27 Tue
4 Sun	12 Mon	20 Tue	28 Wed
5 Mon	13 Tue	21 Wed	29 Thu
6 Tue	14 Wed	22 Thu	30 Fri
7 Wed	15 Thu	23 Fri	31 Sat
8 Thu	16 Fri	24 Sat	

Crossocheilus oblongus Siamese Flying Fox

These lively group animals grow up to 16 cm (6.3 in.) and require a correspondingly big and also covered aquarium. They can well be kept together with other fish, but may also cause some unrest in the tank, especially when they are older. Due to their original habitats (brooks with rapidly flowing water) they enjoy strong currents and water rich in oxygen.

Vipachips Nature
Chips keeping their shape as a staple diet for fish at the bottom ground





August

1 Sun	9 Mon	17 Tue	25 Wed
2 Mon	10 Tue	18 Wed	26 Thu
3 Tue	11 Wed	19 Thu	27 Fri
4 Wed	12 Thu	20 Fri	28 Sat
5 Thu	13 Fri	21 Sat	29 Sun
6 Fri	14 Sat	22 Sun	30 Mon
7 Sat	15 Sun	23 Mon	31 Tue
8 Sun	16 Mon	24 Tue	

Testudo hermanni boettgeri Hermann's Tortoise

This animal has already been living for 60 years, and some more will follow. A purchase should be well considered not only because of the age to be expected (up to 100 years). The diet of tortoises is very important and forms the basis for high age. They require a diet rich in fiber for their digestion.

reptil Professional
Herbivor Nature
Two-part complementary
food for herbivorous reptiles





September

1 Wed	9 Thu	17 Fri	25 Sat
2 Thu	10 Fri	18 Sat	26 Sun
3 Fri	11 Sat	19 Sun	27 Mon
4 Sat	12 Sun	20 Mon	28 Tue
5 Sun	13 Mon	21 Tue	29 Wed
6 Mon	14 Tue	22 Wed	30 Thu
7 Tue	15 Wed	23 Thu	
8 Wed	16 Thu	24 Fri	

Paracheirodon simulans

Green Neon Tetra

Due to their bright colors and peaceful nature, neon tetras are among the most popular ornamental fish. They prefer a slightly darker environment and being kept in a bigger group. The aquarium therefore should provide both a well planted area and free swimming space.

Vipan, San & Flora Nature
Natural ornamental fish
food without dyes and
preservatives





October

1 Fri	9 Sat	17 Sun	25 Mon
2 Sat	10 Sun	18 Mon	26 Tue
3 Sun	11 Mon	19 Tue	27 Wed
4 Mon	12 Tue	20 Wed	28 Thu
5 Tue	13 Wed	21 Thu	29 Fri
6 Wed	14 Thu	22 Fri	30 Sat
7 Thu	15 Fri	23 Sat	31 Sun
8 Fri	16 Sat	24 Sun	

Panaque nigrolineatus

Royal Panaque

Like most South American plecos, this specimen also likes it warm. It is mainly herbivorous and rasps off wood and other herbal materials. With a size of at least 30 cm (12 in.) it requires a correspondingly big aquarium for appropriate keeping.

Catfish Chips Nature
Chips rich in ballast substances for rasping and suckermouth fish





November

1 Mon	9 Tue	17 Wed	25 Thu
2 Tue	10 Wed	18 Thu	26 Fri
3 Wed	11 Thu	19 Fri	27 Sat
4 Thu	12 Fri	20 Sat	28 Sun
5 Fri	13 Sat	21 Sun	29 Mon
6 Sat	14 Sun	22 Mon	30 Tue
7 Sun	15 Mon	23 Tue	
8 Mon	16 Tue	24 Wed	

Symphysodon aequifasciatus Discus "White Leopard"

Discus have special requirements concerning water quality, setup and food. If these preconditions are fulfilled, they will pay it back for many years by their royal appearance. They like it warm and must be kept with other members of the same species.

Discus ImmunPro Nature
Probiotic growth food for discus fish





December

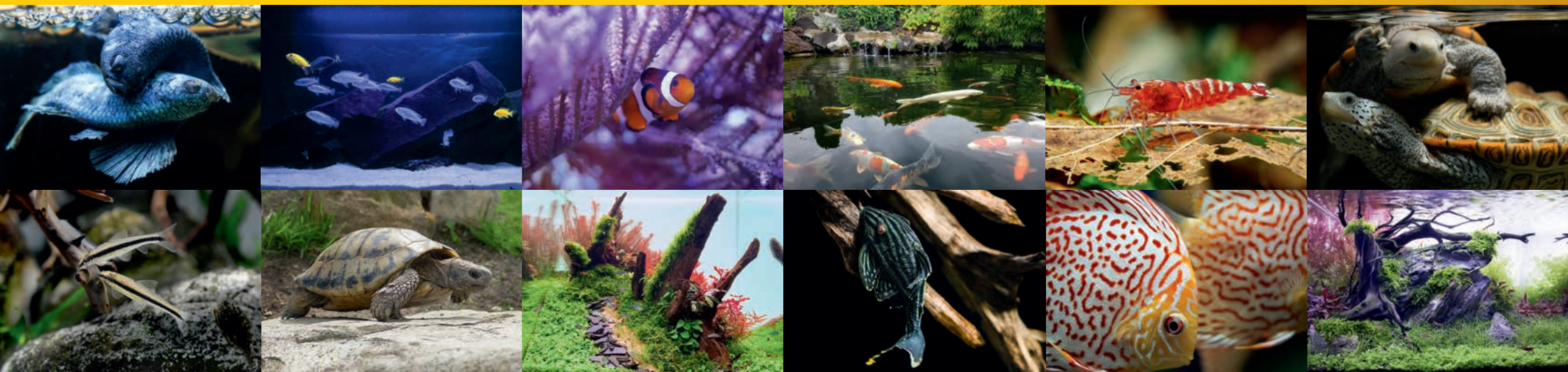
1 Wed	9 Thu	17 Fri	25 Sat
2 Thu	10 Fri	18 Sat	26 Sun
3 Fri	11 Sat	19 Sun	27 Mon
4 Sat	12 Sun	20 Mon	28 Tue
5 Sun	13 Mon	21 Tue	29 Wed
6 Mon	14 Tue	22 Wed	30 Thu
7 Tue	15 Wed	23 Thu	31 Fri
8 Wed	16 Thu	24 Fri	

Community aquarium

A well structured aquarium is not only beautiful to look at, but at the same times forms an appropriate habitat for smaller and bigger living beings. Shrimps, in particular, do well in this Scaper Cube. Natural decoration such as rocks and roots provide suitable hideaways.



AquaTanks & Scaper Cubes
Modern design aquariums for individual configuration



Printed in Germany

sera®

www.sera.de

44373-04EN